



## The Monmouth Township Farm, Jackson County, Iowa

*In the 1856 Iowa Census, John Wasson was identified as a tenant farmer living in Monmouth Township, Jackson County, Iowa with his wife Jemima and their then-six children. We are direct descendants of John, Jemima and their son Joe.*

After living in the village of Canton, Jackson County when they first arrived in Iowa in 1854, the 1856 Iowa Census showed that John and Jemima Wasson were tenant farmers in Monmouth Township, Jackson County.

The closest-in-time plat map for the area was dated 1867, as much as 11 years later (plat maps were often a year or two out of date by the time they were published), and plat maps generally show the names of land owners, not renters, so there isn't a plat map that shows where the Wassons lived in Monmouth Township at that time.

However, I identified a set of farms in Monmouth Township, one of which the Wassons may have called home in 1856. I first compared the order of names in the 1856 Iowa Census with names on the 1867 plat map, and then compared that plat map to a recent Google Satellite image of the area.

1 13	Nathan Jewett	41	1	5	New York	Farmed	1	1
	Elisa J Jewett	39	1	"	Connecticut			
	Victor Jewett	38		"	Ohio			1
	Susannah Jewett	16		"	Do			
	Nathaniel Jewett	14		"	Do			
	Wilson A. Jewett	12		"	Do			
	John D Jewett	8		"	Do			
	Abigail J Jewett	6		"	Do			
	Marrieth M Jewett	4		4	Iowa			
	Amos M Jewett	2		2	Do			
	Fanny Walker	17		2	New York			
1 13	J D Collins	36	1	0	New Jersey	Farmed	1	1
	Mary E Collins	21	1	0	Vermont			
	Emeline Collins	11		0	Ohio			
	Maryann Collins	9		0	Do			
	E T Collins	9		0	Do			
	E D Collins	7		0	Do			
	M P Collins	5		0	Do			
	Hannah Collins	0		0	Iowa			
	G J Collins	22		0	New Jersey	now	1	1
	J H Vanhawton	17		0	Do			
1 14	David Scott	31	1	9	Indiana	Farmed	1	1
	Emily Scott	29	1	8	Do			
	Silvester Scott	7		7	Iowa			
	Amos Scott	6		6	Do			
	Columbus Scott	3		3	Do			
1 15	Anna Carr	40	1	10	Ireland			
	Lamus Carr	15		15	Iowa			

Part of the 1856 Iowa Census for Monmouth Township, Jackson County (part 1)

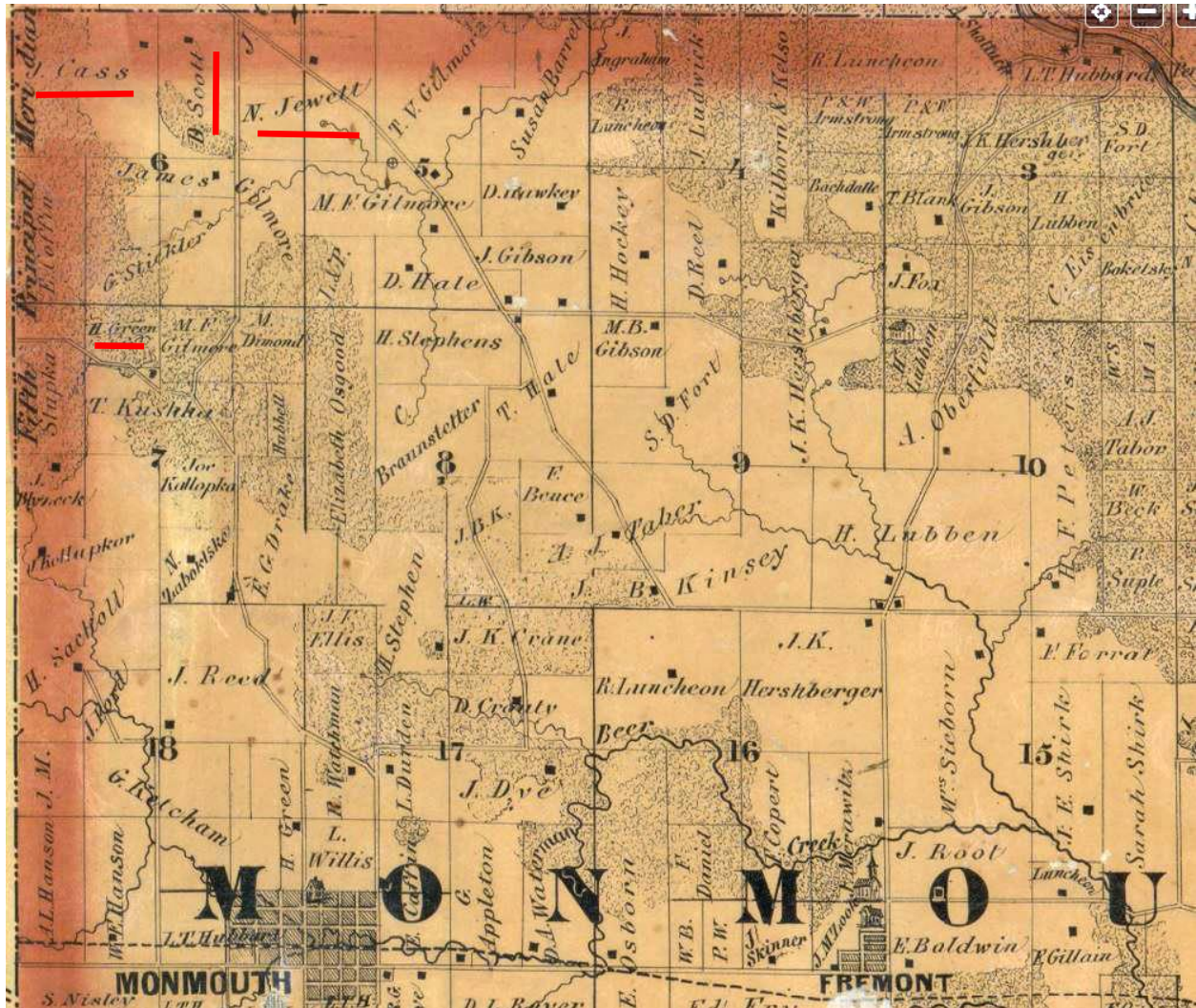
116	William H Query	55 M	1	0	Pennsylvania	Farmed	1	
	Nancy Query	53 F	1	0	So			
	Robert F Query	37 M		2	So		1	1
	Elizabeth Query	8 F		0	So			
	William Query	6 M		0	So			
117	John Wasson	44 M	1	2	Scotland	Farmed	1	
	Levina Wasson	39 F	1	2	So			
	John Wasson	14 M		2	Atlantic Ocean			
	Jane Wasson	12 F		"	New York			
	Mary Wasson	10 F		"	So			
	Levinett Wasson	9 F		"	So			
	William Wasson	7 M		"	So			
	James Wasson	3 M		"	So			
118	Clark McKinney	21 M	1	8	Ohio	Farmed	1	1
	Ronilla McKinney	18 F	1	17	So			
	Charles McKinney	0 M		1	Iowa			
119	William Green	58 M	1	13	Ohio		1	
	Nancy Green	40 F	1	"	So			
	William Green	13 M		"	So			
	Elizabeth Green	17 F		"	So			
	Samanth Green	11 F		11	Iowa			
	Volcano Green	1 M		1	So			
120	Sarah Heath	66 F	1		Pennsylvania			
	John Heath	21 M		16	Ohio		1	1

Part of the 1856 Iowa Census for Monmouth Township, Jackson County (part 2)

Note the order of the family names, with those appearing on the 1867 plat map in boldface:

- Jewett (12)
- Collins (13)
- **Scott (14)**
- **Cass (15)**
- Query (16)
- Wasson (17)
- **Green (18)**

Census takers did not randomly knock on doors. Rather, they methodically worked their way through a township to ensure completeness. In 1856, Monmouth Township was likely less populated than it was in 1867, and it probably lacked most of the roads that we see in the plat map. But when we mark the four names from the 1856 Iowa Census to farms on the plat map, we see the makings of a likely route through sections 6 and 7 – Jewett to Scott to Cass to Green.



1867 plat map of Monmouth Township, sections 5, 6 and 7 with names from the 1856 Iowa Census highlighted.

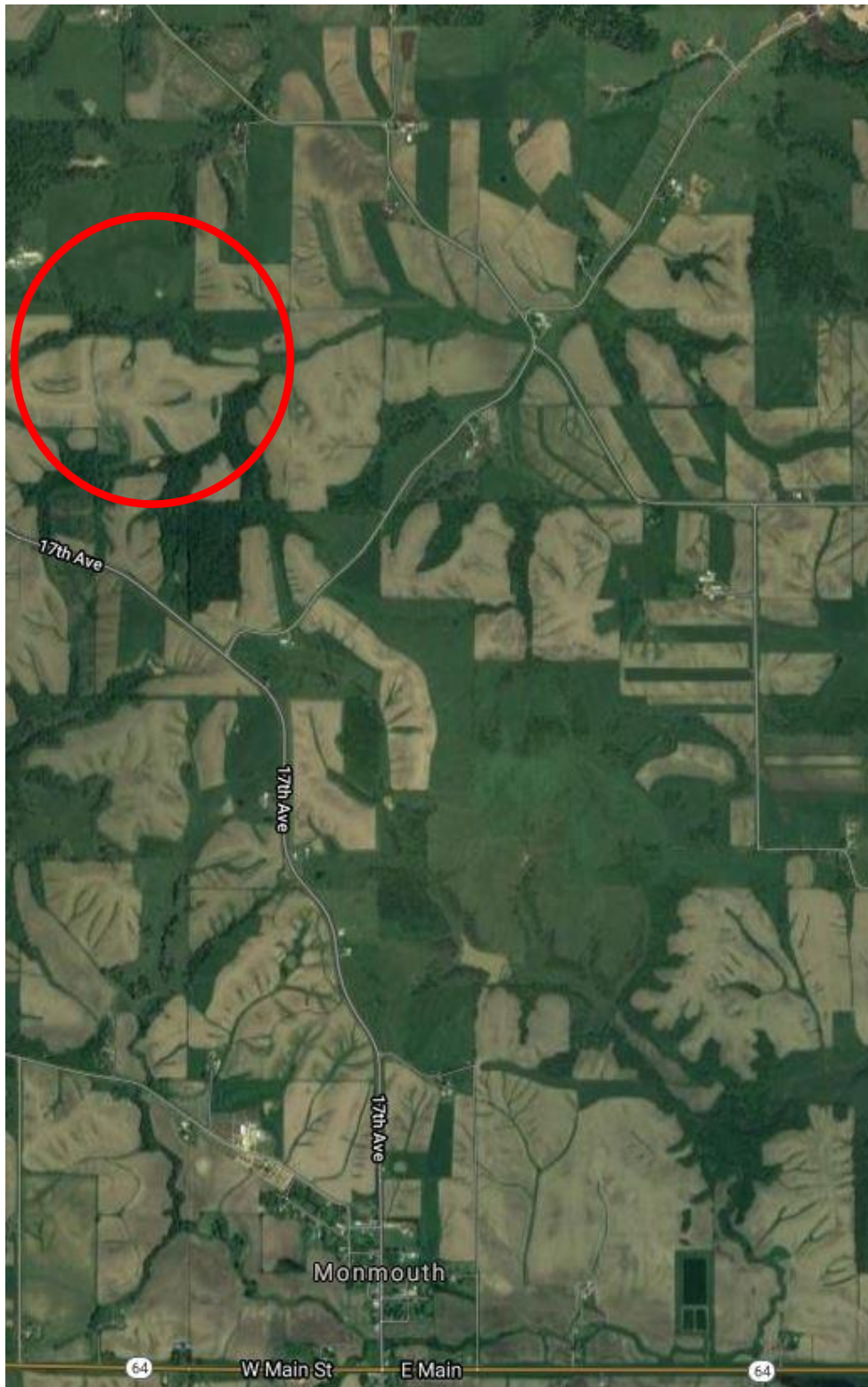
The census taker visited the Collins household between Jewett and Scott. Given its location, that was possibly the James Gilmore farm on the 1867 map.

The census taker then visited the Query household and the Wasson household between Cass and Green. Given their locations, and these were possibly the E. Coffin farm and the G. Stickler farm.

However, farm boundaries can change over time as owners add to their farms or sell off part of them. If the west half of the Jewett farm in 1867 that borders on the Scott farm was home to the Collins household in 1856, then the census taker likely followed his visit to the Cass farm with stops at what in 1867 were the James Gilmore and G. Stickler farms en route to the Green farm.

Either way this suggests that in 1856 John and Jemima Wasson and their family were living at what in 1867 was the G. Stickler farm. This isn't proven, by any means, but I believe that in all likelihood the Wassons lived somewhere on that group consisting of the Stickler, Coffin and Gilmore farms.

I then compared the plat map to a recent Google Satellite image of the area.



*The old Stickler, Coffin and Gilmore farms were north of Monmouth, generally in the area of the red circle. This is north of today's 17<sup>th</sup> Avenue/Highway E29 and northwest of 10<sup>th</sup> Avenue.*



*Looking out in the direction of the former Coffin, Stickler and Gilmore farms from Highway E29 near 120<sup>th</sup> Street*



*Looking out in the direction of the former Coffin, Stickler and Gilmore farms*

### **The Birth of Joe Wasson**

John and Jemima Wasson's son Joseph (Joe) was born in Jackson County in September 1857. He was probably born on the Monmouth Township Farm, although we don't know that for sure. After the 1856 Iowa Census, the next time the Wassons appear in the available records is in the 1860 U.S. Census.

Prepared by Mark David Wasson  
Last updated October 31, 2021